

GO MODULAR



AN AMICO COMPANY



WELCOME



A-Linx is a rapidly-emerging leader in volumetric and panelized construction.

As part of the Amico group of companies, it has access to in-house expertise across a wide slate of construction disciplines.

Since 2016, A-Linx has been driven by a culture of innovation and a vision for game-changing design.

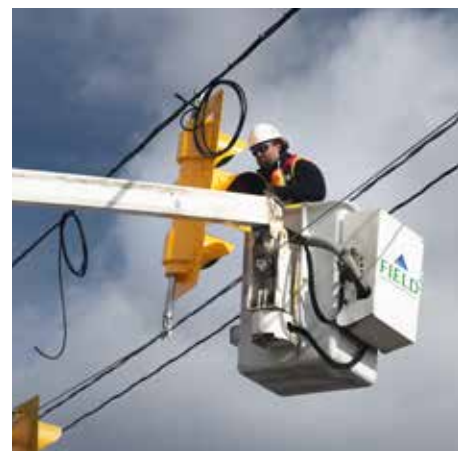
It's time to create and embrace the new possible. It's time to go modular.



VERTICAL INTEGRATION



PANELIZED & MODULAR



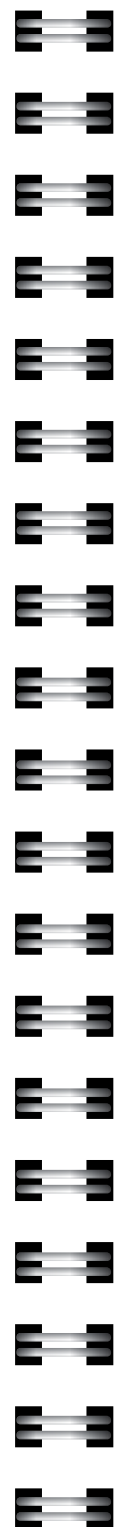
ELECTRICAL



ROBOTICS



ROAD SURFACING



MAJOR PROJECTS



INFRASTRUCTURE



DESIGN BUILD



PROPERTIES

Self-performance across a wide range of construction disciplines gives Amico and its affiliates an unmatched ability to innovate and to advance bold new solutions to Canada's infrastructure challenges.



PANELIZED CONSTRUCTION



The A-LINX system represents a comprehensive, game-changing approach to construction. For architects and engineers who design and build using light-gauge steel, A-LINX provides significant out-of-the-gate competitive advantages compared to conventional alternatives. Here is an overview of the systems major structural components:

Our factory-made components:

- are assembled to high-precision standards
- dramatically reduce production waste
- are adaptable to a variety of design approaches

1. Floor assemblies

A-LINX uses a variety of floor systems, including composite decks, hollow-core plank, open web steel joists, and standard C-joists.

2. Exterior walls

Exterior wall sections are typically shipped with insulation, air barrier and sheathing in place. They can also be shipped with a variety of pre-installed exterior finishes, i.e. EIFS, faux brick, hardy board or aluminum paneling.

3. Prefab panels

Load- and wind-bearing panels are designed using specific gauges and dimensions based on load requirements to support the building's complete superstructure.

4. Structural steel

Structural steel elements such as posts, angles, HSS and W sections, are included as required to provide added strength for point loading and to support larger spans.

5. Lintels

Steel stud/track or structural steel beams are installed above most windows and doorways to distribute load across open spans.

6. Slab shoring

When required, these temporary beams support the floor slab while the concrete is being poured and cured. They are strategically located to allow roughing in of interior walls on below floors.

Typical inclusions not illustrated

- Cast-in-place cores
- Pre-installed windows and doors
- Prefabricated mechanical openings
- Shop drawing preparation and engineering



MODULAR CONSTRUCTION



Panelized and modular construction are already beginning to eclipse conventional construction methodologies.

As part of the Amico group – with its diversity of applied, intellectual and financial resources – A-Linx is uniquely positioned to lead the development of construction automation and standardization. We have even developed a robotics assembly division in anticipation of near-future production trends.

In these and other ways, A-Linx is leading a major shift within the construction field.





MEDICAL

Canada's public health system is under intense pressure to innovate, to heighten responsiveness and to operate under increasingly strained financial structures. Modular construction offers a fully scalable and rapidly deployable solution for long-term facility development and for short/mid-term emergency response.

A-LINX medical units are constructed to consistently precise tolerances in a sanitary, controlled manufacturing environment that meets or exceeds regulatory standards.



APPLICATIONS



abita[®]
 MODULAR LIFESPACE

RESIDENTIAL



Volumetric construction provides timely solutions for Canada's housing challenges. Modular components are stronger, more resilient to the elements, more precisely built and ultimately more affordable than conventional construction methods.

See page 16 for a detailed list of benefits.





APPLICATIONS

DATA MULT

MODULAR SOLUTIONS FOR DATA STORAGE

COMMERCIAL

A-LINX is actively pursuing modular applications across a variety of commercial uses, including data centres, detention facilities, modular office structures and more. In addition to scalability, precision, process control and cost management, this technology also adds rapid deployment that allows enterprises to respond to opportunities on a more timely basis.

The future is modular.





KEY BENEFITS

MODULAR CONSTRUCTION SIMPLY MAKES BETTER SENSE

Built for Canada's housing challenges

- Factory built using modern methods that meet National Building Code
- Rapid deployment in urban, rural, and remote locations
- Deploys from single ADUs up to 20-storey communities
- Reduced construction timelines with modules arriving finished and ready to place

Fully integrated model

- Design, engineering, fabrication, transport, and site build all managed in-house
- Consistent quality control, predictable timelines, reduced risk

Replicable at scale

- Standardized systems allow province-to-province rollout without re-engineering
- Efficient transport and on-site assembly
- Streamlined process supports large-scale community builds

Adaptable to local needs

- Flexible layouts and finishes suited for diverse communities
- Ability to reflect cultural and aesthetic priorities
- Custom design options without slowing production



A-LINX USES ONLY 100% CANADIAN STEEL



LIGHT GAUGE STEEL: A FUTURE-PROOF ADVANTAGE

Stronger and safer

- Strength-to-weight ratio three to five times higher than wood
- Engineered to handle transport, wind, and seismic conditions
- Non-combustible structure protects people and reduces insurance costs

Durable and healthy

- No rot, termites, mold, or shrinkage
- Maintains structural integrity across seasons
- Precision-built components eliminate warping

Faster and predictable

- Factory production shortens build schedules by thirty to fifty per cent
- On site assembly completed in days
- Immune to lumber price swings and weather delays

Sustainable choice

- Entire structure is recyclable steel
- Minimal waste in production
- Reduced foundation requirements and lower transportation emissions
- Supports high performance energy design and airtight construction

The Result: a repeatable and adaptable building solution that is:

- Faster to build
- Stronger and safer
- More sustainable
- Built for scale in any community

KEY CONTACTS

Greg Geml

General Manager
 2155 Blackacre Drive
 Oldcastle, ON NOR 1L0
 T: 519-737-1577
 M: 226-724-7219
 greg.geml@alinx.build

Justin Amicone

General Manager
 Amico Design Build
 2155 Blackacre Drive
 Oldcastle, ON NOR 1L0
 T: 519-737-1577
 M: 519-890-4486
 justin.amicone@amico.build





2155 Blackacre Drive
Oldcastle, ON NOR 1L0
519-737-1577
www.alinx.build

GO MODULAR